



30<sup>th</sup>

# CSL Celebrates the Anniversary of the *Heart of the Home* Tour

## What's New and Not Since 2008

Ten years ago on the 20th Anniversary of our tour, we published the brief history of CSL that you see to the left. Since then, despite the economic downturn that hit all non-profits hard, the group and the Heart of the Home Tour have gone from strength to strength. We are still an all-volunteer organization, and we still operate with a 3% overhead, which means we still do the work ourselves and pay to attend our own events.

There have been changes, but not to our focus on helping children and on finding wonderful tour homes. We now sell many, but not all, tour tickets online. Members and a few stores sell the rest. We've expanded your tour experience with the VIP program. We've reached out to more donors through the underwriting effort. The raffle continues, and there is now a silent auction at the Tour Kickoff party, which is new too. We do more online outreach to tour goers, volunteers, and agencies. The Pop-Up Boutique has expanded to a wonderful shopping opportunity. And, we brought in food trucks to brighten up lunch at the Piedmont Community Center.

We are still known for the care with which we evaluate grant applications and for our dedication to putting our hard-won dollars toward



2008 Tour Book

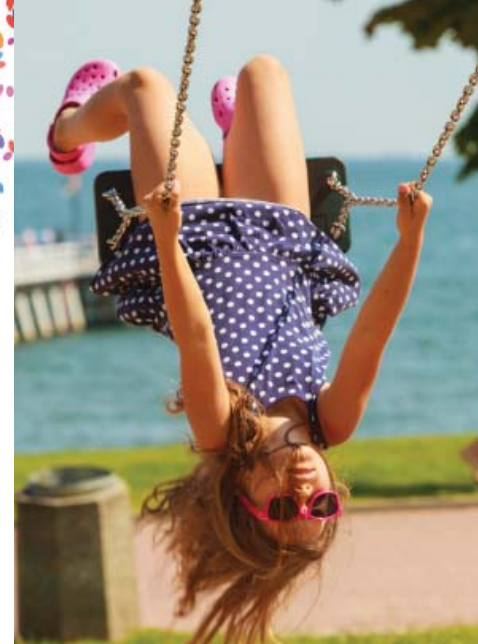
## A Brief History of CSL from the 2008 20th Anniversary Tour Book

Children's Support League was founded in 1986 by 48 dedicated women who wanted to help children in our community. The strengths the organization exhibits today were evident from the very beginning. Originally, the group raised funds exclusively to benefit the Junior Center of Art and Science. The members eventually decided that they wanted more control over the money they raised, and that they wanted to keep working together. CSL was incorporated as a stand-alone, non-profit organization in December 1986. It is characteristic of CSL that from the very beginning we had members who were able to do the legal work, so no funds raised for children were diverted to that purpose.

*Continued on next page*



CHILDREN'S SUPPORT LEAGUE  
of the East Bay



### CSL supports at-risk children in the East Bay



programs that directly benefit children in our community. Much more of the application and evaluation process is now done online. Since 1988, CSL has donated \$3.6 million in grants to programs supporting at-risk children in Alameda

and Contra Costa Counties. In 2017 we gave \$140,000 to sixteen agencies.

Another thing that has not changed is the camaraderie of the hard-working women of CSL. Our original members were mostly from Piedmont. Now they also come from Oakland and surrounding cities, including some in Contra Costa County. As our membership has expanded, we've extended our grantmaking more into Contra Costa County too.

In the 1990s when members lived closer together, they organized a progressive dinner in the fall, moving from house to house for each course. In the summers up to 20 members sometimes rented a house near the beach for a weekend getaway. Those traditions faded away, but we now have a monthly social get together for any member who can drop in. One of this year's new members, Catherine Metzger, says she has enjoyed these gatherings. "Even though I'd lived in Piedmont for a long time and even been a docent on the tour," Catherine says, "it wasn't until I moved away and then came back that I realized



I didn't know my neighbors in a problem-solving way. Once I got involved in CSL, I saw that the group has developed a wonderful tool to help our community. Everyone has made me very welcome. It's a joy to me that I have a place to use my talents to help children and to work with this group of like-minded women."

#### Brief History, continued from previous page

In its early years, CSL tried various types of fundraisers — a fashion show, a casino night — before settling on the kitchen tour. The proceeds from the first tour allowed the group to donate \$6,000 to three children's charities. Eventually the tour grew beyond the kitchen to become a kitchen and home tour.

In 2007, Peggy Munich, who was the first President of CSL, said, "We were lucky that one of our members was familiar with grant writing and taught us what to watch for when agencies would ask for money. It was a very talented group." CSL's careful evaluation of agencies that request grants is still one of its great strengths.



# CSL's 30<sup>th</sup> Year of Grants for Children



The Children's Support League of the East Bay has contributed over \$3,600,000 to agencies that serve children in Alameda and Contra Costa Counties over the past 29 years. We have given grants to approximately 100 different local agencies. We have reached out to children in their homes, in shelters, in schools, in hospice, in foster care, and in juvenile detention. We have supported parents, grandparents, and other caregivers as well as the many wonderful people who have the skills and grit to work directly with the children who need their help. Details of the many types of programs that received our grants can be found on our website at [ChildrensSupportLeague.org](http://ChildrensSupportLeague.org).

## Food and Shelter

**\$961,000 | 26%**

### Food & Nutrition

Alameda County Food Bank: Children's Food Backpack  
 Children's Food Basket, Oakland  
 Loaves and Fishes, Contra Costa County

### Shelter and Therapy for Families Escaping Domestic Abuse

A Safe Place, Oakland  
 Building Futures with Women & Children, San Leandro  
 Bay Area Crisis Nursery, Concord  
 Emergency Shelter Program, Hayward  
 Jewish Family and Youth Services, Richmond  
 STAND for families Free of Violence, Contra Costa County.

### Shelter and Support Services for Homeless Families

Building Opportunities for Self Sufficiency (BOSS), Berkeley

FESCO, Hayward  
 Greater Richmond Interfaith Program  
 Home Place Family Center  
 Loved Twice, Alameda County  
 Mandela House, Oakland  
 Oakland Elizabeth House  
 Perinatal Network of Alameda Shelter Inc., Concord  
 Sophia Project, Oakland  
 St Vincent De Paul of Alameda County  
 Winter Nights, Contra Costa County  
 Women's Daytime Drop-In Center, Berkeley

## Child Abuse Prevention & Support

**\$764,000 | 21%**

### Child Abuse Intervention, Violence Prevention, and Support

Bay Area Women against Rape, Alameda County.  
 CALICO Child Abuse Listening Interviewing & Coordination Center, Alameda County.

Child Abuse Prevention CAP of Contra Costa  
 Community Violence Solutions, Contra Costa County.  
 Family Paths (formerly Parental Stress Services), Oakland.  
 Family Stress Center (Merged with STAND! In 2010), Concord  
 Family Violence Law Center, Alameda County  
 Youth Alive, Oakland



### Parent and Caregiver Education, Training, and Support

Bay Area Parent Leadership Action Network (PLAN), Oakland  
 Children's Hospital, Oakland  
 Family Resource Navigators, Alameda County  
 Family Support Services, Oakland  
 Legal Assistance for Seniors, Oakland



## Assistance for Special Needs Children

\$701,650 | 19%

### Educational Support for Special Needs Children

Ala Costa Center, Oakland  
 Alta Bates: East Bay AIDS Center Youth Clinic, Oakland  
 Center for Accessible Technology, Berkeley  
 Center for Early Intervention on Deafness, Berkeley  
 Down Syndrome Connection, Danville  
 Junior Blind (formerly Blind Babies Foundation), Alameda and Contra Costa Counties  
 Through the Looking Glass, Berkeley

### Therapeutic Fitness and Recreation for Children with Special Needs

All Seasons Riding Academy, Alamo  
 Bay Area Outreach and Recreation Program (BORP), Berkeley  
 Diabetic Youth Foundation, Concord  
 Special Needs Aquatic Program (SNAP), Berkeley  
 We Care Services for Children, Contra Costa County  
 United Cerebral Palsy, Alameda County  
 Xenophon, Orinda

### Hospice and Support for Critically Ill Children and their Families

George Mark Children's House, San Leandro  
 East Bay Agency for Children, Oakland  
 Hospice of the East Bay, Pleasant Hill

## Education

\$598,000 | 17%

### After School/Enrichment/Summer Education Support Programs

Aim High for High School  
 Boys & Girls Club of Oakland  
 Big Brothers/Sisters of Oakland  
 Camp Fire Boys & Girls, West Oakland.  
 Camp Phoenix: sleep away summer camp for Oakland youth  
 Center for Human Development, North Richmond  
 Community Education Partnerships, Alameda County  
 East Bay Children's Theater, Oakland  
 Jubilee West, West Oakland  
 Junior Center for Art and Science, Oakland  
 Oakland Fund for the Arts

### Job Skills Development for At-Risk Teens

An Eye for Style Fashion Academy, Oakland  
 Businesses United in Investing, Lending, and Development (BUILD), Oakland  
 Serendipity, Mt. Diablo High School  
 Thunder Road, Oakland  
 Youth Movement Records, Oakland.

### Literacy Support

Alameda County Library Foundation, program at Alameda County jails  
 Aspire Education Project, Oakland  
 Contra Costa Youth Council, tutoring at juvenile detention facility  
 Experience Corps Bay Area, Alameda County  
 Faith Network of the East Bay: Succeeding by Reading, Oakland  
 Learning for Life, Oakland  
 Tandem (formerly Raising a Reader), Alameda and Contra Costa Counties

Reading Partners, Oakland  
 Superstars Literacy, Oakland  
 Write to Read, Alameda County

## Mental Health and Therapy

\$328,500 | 9%

### Emotional Support and Therapy

Ann Martin Center, Oakland  
 Contra Costa Crisis Center, Walnut Creek  
 Family Institute of Pinole, facility in Richmond  
 Kids' Turn, Oakland  
 Lincoln Child Center, Alameda County  
 Link to Children, Oakland  
 West Coast Children's Clinic, Oakland  
 Wright Institute, Oakland

### Recreation for At-Risk Teens

Girls on the Run, Alameda County  
 Students Run Oakland

## Adoption & Foster Children Support

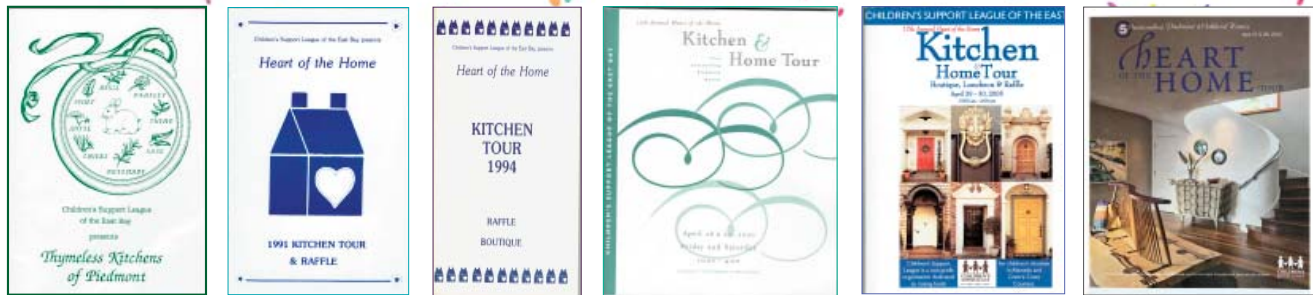
\$275,600 | 8%

### Adoption Support

Adopt a Special Kid, Oakland  
 Adoption of African American Children Committee, Oakland  
 Family Builders by Adoption, Oakland  
 PACT an Adoption Alliance, Emeryville

### Foster Children Support

Court Appointed Special Advocates CASA of Alameda  
 Court Appointed Special Advocates CASA of Contra Costa County  
 Legal Services for Children  
 UJIMA Family Recovery Services, Contra Costa County  
 Youth Homes, Contra Costa County



Covers from some past Tour Books

## A Salute to CSL Underwriters

In 2003, CSL members looked around a meeting table after that year's tour and said to each other, in essence, we've got this down and the tour gets better every year, but the amount of money we are able to pass on to the kids isn't growing very much. Fortunately, we had at least one member with professional experience in fundraising, and thus the CSL underwriting effort was born with the 2004 tour. Those logos you see on our signs and printed material are there because businesses in our community have responded to our pleas with underwriting dollars. We are touched and grateful at how much 134 local businesses have helped us raise money for at-risk children over the past 14 years, and we thank and salute them!

AAA House Manager  
 Abbot Downing  
 AG Design Studio  
 Alarcon Bohm  
 Alain Pinel Realtors  
 Allied International  
 Amore Vero Design  
 Arana Craftsman Painters  
 Baker Marble and Granite  
 Balco Properties  
 Bauwerk, Inc.  
 Bay Area Designer Builders  
 Bay Design & Build  
 Bella Ironworks  
 Blisshaus  
 Burr Pilger Mayer, Inc.  
 CA Kitchen Design  
 California Bank & Trust ♡  
 Camber Construction  
 Cameron Habel Construction  
 Canyon Design Build  
 Carlene Anderson Kitchen Design, Inc.

Cerami Builders  
 CertaPro Painters  
 Claremont Rug Company  
 Clif Bar Family Foundation ♡ ♡  
 Creative Spaces  
 Creative Stoneworks  
 Custom Kitchens  
 Dotter & Solfeld Architecture & Design  
 Draperies by Susan  
 dVb Design + Build  
 Earthquake Safety  
 East Bay Moms ♡ ♡  
 Economy Lumber  
 Elegant Clutter  
 El Shaddai Painting  
 Elliot Remodeling Co.  
 Emmett Eiland Oriental Rug Co.  
 Ethan Allen Construction  
 Dan Felker Construction  
 Finn-Laczko, Architects  
 Fireclay Tile

GAP Foundation  
 Gardner's Guild  
 Garibaldis  
 Gary Earl Parsons, Architects  
 Laurie Ghielmetti Interiors  
 G&M Cabinets  
 GMS Global, Inc.  
 Gold Leaf Construction  
 Golden Gate Sotheby's International Realty ♡  
 Graff Architects  
 Green Air  
 The Grubb Co ♡  
 HDR Remodeling  
 Henderson Design Group  
 Hidden Connections, Inc.  
 Highland Partners ♡ ♡  
 Highland Partners/Mason-McDuffie  
 Holmgren and Associates  
 Infinity Financial  
 Integrity Remodeling, Inc.



Jarvis Architects  
 Jason Kaldis Architects  
 Jetton Construction, Inc. ♥  
 Joey Mota Landscaping  
 Jonathan Dougall, Inc.  
 Jonathan Taylor Design  
 John Mallick and Associates  
 Lantech  
 Laufenberg Interior Design, Inc.  
 Lazar Landscape  
 Lloyds Custom Woodwork, Inc.  
 LMB Interiors  
 Manou Design Group  
 Marvin Deal, Builder  
 M B Jessee ♥ ♥  
 McCutcheon Construction  
 Men's Wearhouse  
 Michael Friedes Design Associates  
 Mitchell & Riera Architecture  
 Morgan Stanley  
 Mueller Nichols  
 Nanawall  
 Nancy Kent landscape Architect  
 Navarra Design, Inc.  
 Nest Home Design  
 Newell Construction  
 Nick W. Ozier, Design and  
 Construction  
 O'Brien Contracting  
 OKB Architecture  
 OneCalifornia Bank  
 Pacific Crest Builders  
 Pacific Union Bank  
 Patricia Motzkin Architecture  
 Pearson-Barnes Design  
 PetersenDean  
 Phatlip Halloween Custom Bash &  
 Fundraiser  
 Plath & Company  
 Rebecca Schnier Architecture  
 Relish Catering

Rich Richetta & Associates /Alain Pinel  
 Realtors  
 Rivendell Woodworks  
 Robert Trachtenberg, Garden  
 Architecture  
 Roberts Electric Co.  
 Rolander Construction  
 Ryan Associates  
 Scheiber Design Group  
 Schwab  
 SDG Architects, Inc.  
 Shaddle Construction  
 Stahlshmidt Painting & Restoration  
 Style Bath & Kitchen  
 StudioBecker  
 studio M MERGE  
 SunnyHills Studio  
 Suzman & Cole Design Associates  
 Sybase ♥  
 Tecta Associates  
 Titans of the East Bay  
 The Toboni Group  
 Torrey Pines Bank  
 20/20 Builders  
 Village Associates Real Estate  
 Vodafone Americas Foundation  
 W.A. Rose Construction, Inc.  
 Wells Fargo ♥  
 Welte Construction  
 Westwind Builders  
 William Anderson Interiors, Inc. ♥ ♥  
 William F. Holland, Architect  
 Wilson Glass  
 Young & Burton, Inc.



## Sustaining Donors

A very special thanks to underwriters who have donated for ten or more years. We are deeply grateful for their continued belief in our mission and for their repeated, continuing support.

Clif Bar Family Foundation  
 East Bay Moms  
 Highland Partners  
 MB Jessee  
 William Anderson Interiors, Inc.

♥ Donated for at least 5 years

♥ ♥ Donated for 10 or more years